



Electrolux

Modular Cooking Range Line 700XP 4-Hot Plates Electric Boiling Top Range

ITEM # _____

MODEL # _____

NAME # _____

SIS # _____

AIA # _____



Electrolux



Modular Cooking Range Line

700XP 4-Hot Plates Electric Boiling Top Range

371015 (E7ECEH4R00)	700XP 4 HOT PLATE ELECTRIC BOILING TOP 2.6kW - 400V
371127 (E7ECEH4R0N)	700XP 4 HOT PLATE ELECTRIC BOILING TOP 2.6kW - 230V

Short Form Specification

Item No. _____

To be installed on open base installations, bridging supports or cantilever systems. Four 2.6 kW cast-iron hot plates hermetically sealed to the one-piece top. Exterior panels in stainless steel with Scotch Brite finish. One piece pressed work top in 1.5 mm thick stainless steel. Right-angled side edges to allow flush-fitting junction between units.

Main Features

- Unit to be mounted on open base cupboards, bridging supports or cantilever systems.
- The four 2.6kW cast-iron plates are hermetically sealed to the one-piece top.
- The special design of the control knob system guarantees against water infiltration.
- IPX 4 water protection.

Construction

- All exterior panels in Stainless Steel with Scotch Brite finishing.
- One piece pressed 1.5 mm work top in Stainless steel.
- Model has right-angled side edges to allow flush fitting joints between units, eliminating gaps and possible dirt traps.

Optional Accessories

- 4 wheels, 2 swivelling with brake (700/900XP). It is mandatory to install with base supports for feet/wheels. ☐ PNC 206135
- Support for bridge type system, 800mm ☐ PNC 206137
- Support for bridge type system, 1000mm ☐ PNC 206138
- Support for bridge type system, 1200mm ☐ PNC 206139
- Support for bridge type system, 1400mm ☐ PNC 206140
- Support for bridge type system, 1600mm ☐ PNC 206141
- Water column with swivel arm (water column extension not included) ☐ PNC 206289
- Water column extension for 700 line ☐ PNC 206291
- Chimney upstand, 800mm ☐ PNC 206304
- Right and left side handrails ☐ PNC 206307
- Base support for feet or wheels - 800mm (700/900) ☐ PNC 206367
- Rear paneling - 800mm (700/900) ☐ PNC 206374
- Rear paneling - 1000mm (700/900) ☐ PNC 206375
- Rear paneling - 1200mm (700/900) ☐ PNC 206376
- Chimney grid net, 400mm (only for 371127) ☐ PNC 206400
- Frontal handrail 800mm ☐ PNC 216047

APPROVAL: _____



Electrolux

Modular Cooking Range Line 700XP 4-Hot Plates Electric Boiling Top Range

- Frontal handrail 1200mm PNC 216049 ☐
- Frontal handrail 1600mm PNC 216050 ☐
- Large handrail - portioning shelf, 400mm PNC 216185 ☐
- Large handrail - portioning shelf, 800mm PNC 216186 ☐
- 2 side covering panels for top appliances PNC 216277 ☐



**Modular Cooking Range Line
700XP 4-Hot Plates Electric Boiling Top Range**

The company reserves the right to make modifications to the products without prior notice. All information correct at time of printing.

2014.06.23



Electrolux

Modular Cooking Range Line 700XP 4-Hot Plates Electric Boiling Top Range

Electric

Supply voltage:

371015 (E7ECEH4R00)

400 V/3 ph/50/60 Hz

371127 (E7ECEH4R0N)

230 V/3 ph/50/60 Hz

Total Watts:

10.4 kW

Key Information

Front Plates Power:

2.6 - 2.6 kW

Back Plates Power:

2.6 - 2.6 kW

Front Plates dimensions:

Ø 230 Ø 230

Back Plates dimensions:

Ø 230 Ø 230

Net weight:

40 kg

Shipping weight:

371015 (E7ECEH4R00)

37 kg

371127 (E7ECEH4R0N)

55 kg

Shipping height:

540 mm

Shipping width:

830 mm

Shipping depth:

850 mm

Shipping volume:

371015 (E7ECEH4R00)

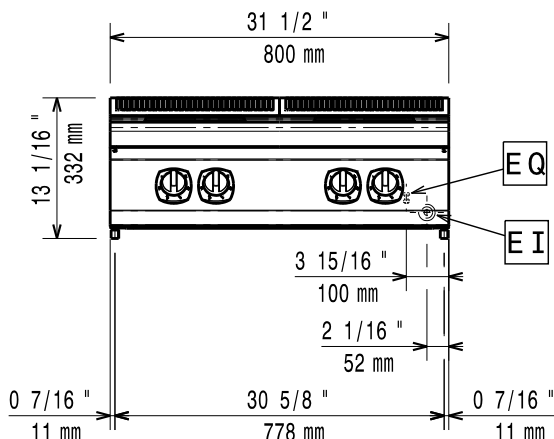
0.38 m³

371127 (E7ECEH4R0N)

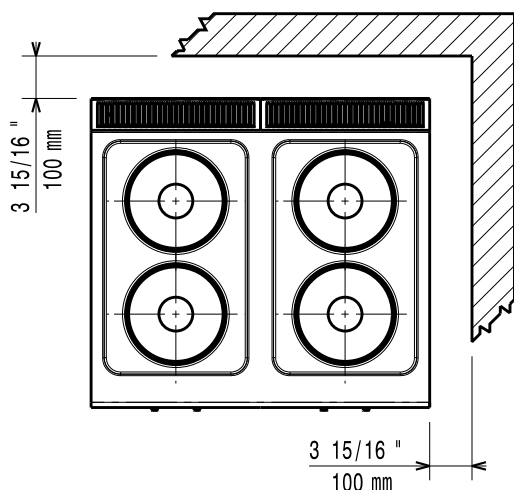
0.4 m³

If appliance is set up or next to or against temperature sensitive furniture or similar, a safety gap of approximately 150 mm should be maintained or some form of heat insulation fitted.

Front

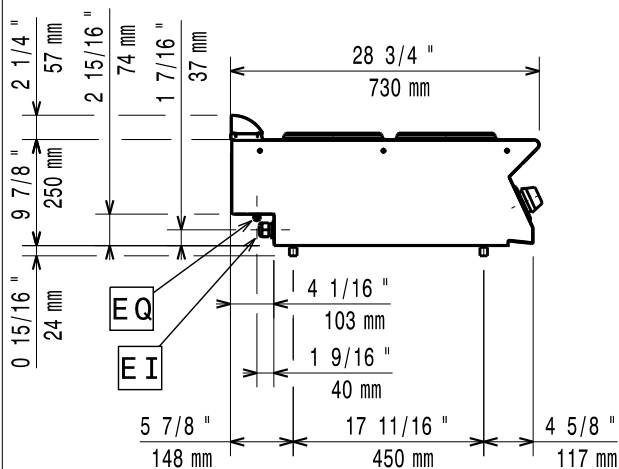


Top



EI = Electrical connection

Side



**Modular Cooking Range Line
700XP 4-Hot Plates Electric Boiling Top Range**

The company reserves the right to make modifications to the products without prior notice. All information correct at time of printing.

2014.06.23